



art
with
elders

Some Exciting News to Share!

Art With Elders uses the power of art, creativity, and community to enrich the journey of aging.

A Message from the Executive Director

Dear Friends and Family of Art With Elders (AWE),

Yet another cool and foggy San Francisco summer has arrived, and it's again time to save the date for our much anticipated annual show.

We have been hard at work preparing for this year's event, slotted for October 27th. The artwork remarkably raises the bar again, and we're thrilled to read the biographies and learn more about the rich lives of our eclectic students. Let's not only recognize our students here but also our valued community partners, who play an important role in making the event all that it has come to be. Here's to all our senior communities, donors, supporting foundations, volunteers and importantly those beloved activity directors without whom the show simply would not go on.

These are, in many ways, challenging times with too many discordant notes of strife and disunity. Our weekly classes remain my safe harbor, continuing to provide nourishing respite from the chaos of the day. The regular sharing of creative thoughts, ideas and camaraderie has become, for me and my students, a lovely and sustainable gift that deserves sincere recognition. I can't help but consider the treasures of wisdom, hope, love and creativity that are continually exchanged during our AWE classes. It's no wonder that this weekly exchange of humanity and creativity culminates in an event of such profound impact.



Gratefully,

Mark Campbell
Executive Director

Exhibit News

Save the Date for Our 27th Annual Exhibit

Our yearly showcase of art from artists in our partner communities across the



Bay Area is happening in few months time. There will be a lot of new art to see, and many of the artists will be in attendance. This year we have over 110 artworks, and the event is open to the public, please join us!

27th Annual Exhibit Opening

Gerald Simon Auditorium

Laguna Honda Hospital

375 Laguna Honda Blvd.

San Francisco, CA 94116

Sunday, October 27, 2019, 2-4pm

Tickets are available through Eventbrite: www.eventbrite.com

See our website for more information: www.artwithelders.org/annual-exhibit,
(click on "Gallery" for images of exhibit work)



Dr. George W. Davis Senior Center





To celebrate our newest class, AWE's Exhibits Manager, Darcie O'Brien, has installed a wonderful exhibit for the senior center and it's visitors to enjoy. The class is being taught by our esteemed Artist Instructor, Virginia Jourdan.

Dr. George W. Davis Senior Center

Creating new opportunities to create, learn, and contribute to the community

The Opening Event was held Mon July 22nd

The exhibit runs from July 15 to September 15, 2019

For more information on the Dr. George W. Davis Senior Center, visit their website:

<https://bhpmss.org/dr-george-w-davis-senior-center/>

BELMONT *Village*
SENIOR LIVING



AWE is excited to exhibit artwork from our Belmont Village Senior Living class in Albany. The AWE class at Belmont Village started just over a year ago, and is taught by our talented Artist Instructor Mei Mei Everson. The class has become very popular with the residents, and four of the students have been selected to have their work exhibited in our upcoming Annual Exhibit in October.

Belmont Village Senior Living

1100 San Pablo Ave.

Albany, CA 94706

www.belmontvillage.com

The exhibit runs from July 29 to October 28, 2019



**1st Annual
*Getting There Together***

The inaugural *Getting There Together* event is a signature citywide celebration of San Francisco seniors and adults with disabilities. Presented by CASE (Coalition of Agencies Serving the Elderly) in partnership with Livable City/Sunday Streets, the Department of Aging and Adult Services, Age and



Disability Friendly San Francisco, and the Dignity Fund Coalition, the event will bring together seniors, people with disabilities, service providers, City officials, and the general public to celebrate and ensure San Francisco is a great place to live and age.

The event will feature: Main Stage, Interactive Resource Fair, and an All Abilities Open Air Gymnasium

AWE will be exhibiting art, selling cards and prints, and creating a community mural. Come join us!

Getting There Together

A Celebration of All Ages and Abilities

website: <http://www.sundaystreetsf.com/gtt/>

Tenderloin in Civic Center — the heart of San Francisco

Sunday, September 8th, 11-4pm

17th annual
COLE VALLEY FAIR
Sunday September 29, 2019



AWE will have artwork, cards and prints on display and for sale at the the annual Cole Valley Fair taking place on Cole Street between Carl and Grattan Streets in San Francisco. Each year it features local artists with fine handmade crafts, delicious food, live music, a full block of vintage automobiles owned by neighborhood residents, children's events including a bouncy house, balloon animals, face painting, a display of historical Cole Valley photographs and more!

Cole Valley Fair

On Cole Street between Carl and Grattan Streets

San Francisco, CA

Sunday September 29, 2019

For more info visit their website: <http://colevalleyfair.com/>



The town of Danville, presents ***Memory & Imagination***, with guest curator Betty Rothaus, an AWE Artist Instructor and director of the arts program at The Reutlinger Community in Danville. The exhibit will include five works of art from the Reutlinger.

Built in 1873 for use as a farmer's lodge, the Village Theatre has been used as a Grange Hall, movie theatre, and church. Recognized as a historic site by the Heritage Resource Commission, the Village Theatre now serves as Performing Arts Theatre. In 2009, the Village Theatre was renovated and the lobby expanded to include an art gallery. The 1,000 square feet space opened its doors on November 14, 2009 and hosts quality art exhibits and receptions. We are thrilled to be part of their exhibitors.

Village Theater Art Gallery

Memory & Imagination

Aug. 25 to Oct. 12, 2019

233 Front St.

Danville, CA 94526

925-314-3460

www.villagetheatreatgallery.com

HOURS:

Wednesday -Friday 12-5pm
Saturday 11-3pm
Monday and Tuesday by appointment only

Continuing Exhibits

The Department of Aging and Adult Services (DAAS) - "DAAS coordinates services for older adults, veterans, people with disabilities, and their families to maximize safety, health, and independence." -
<https://www.sfhsa.org/about/departments/departments-aging-and-adult-services-daas>

SF Community Living Campaign – "Cultivating connections to help seniors and people with disabilities age and thrive at home." -
<https://www.sfcommunityliving.org/>

Upcoming:

For upcoming exhibits and events, please visit our website www.artwithelders.org



We are elated to announce that we received a grant for our exhibit program! The **California Arts Council** has awarded Arts With Elders the Local Impact grant as part of its biggest investment in arts and culture statewide since 2001. Our Annual Exhibit happens every October, and our traveling exhibit, "AWE Inspiring," travels to various venues around the Bay Area throughout the year. Get all the details in the CAC's latest press release: <http://tiny.cc/CACGrants2019>

Student Artist Spotlight

Yu-Mei Lu

Born in mainland China, Yu Mei Lu grew up in a large family in rural Taiwan, where survival meant a lot of hard work. Her first visit to the U.S. was with her husband, a pastor, to Amherst, Massachusetts, where she studied English and art--useful skills for a kindergarten teacher. The two devout Christians returned to Taiwan, where she taught and did church work in a hospital.



Mei came to live in San Francisco in 2007 to be near her adopted daughter. She also has a son in Boston and three grandchildren, and enjoys playing piano, cross-stitching, and knitting.

The fall colors of the maple trees in Amherst still influence Yu Mei's work. "I appreciate those natural things," she says. The 77-year old loves the feeling of freedom that painting gives her, especially with acrylics. It took her awhile to learn that in art, "You don't follow. You just do what you want-- not like in China."

Art, she feels, increases your self-confidence, and "makes your life happy and peaceful." Her advice: "Art is from the inside--it's your idea. Don't let outside things cover your inside things."

Flamingos

Yu-Mei Lu
Western Park Apartments
2018 - Upcoming 27th Annual Show



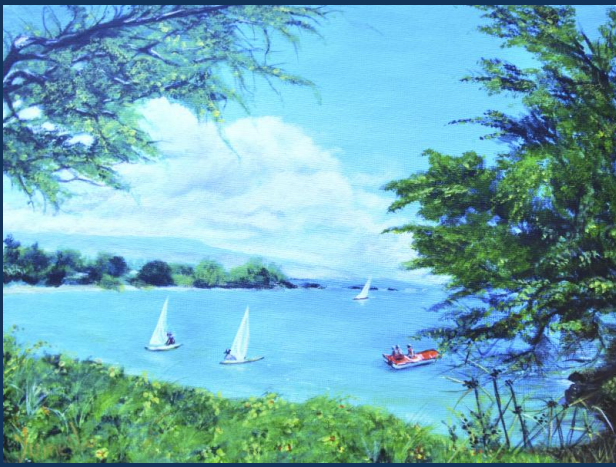
Autumn's Symphony

Yu-Mei Lu
Western Park Apartments
2017 - 26th Annual Show

Dancing Tree

Yu-Mei Lu
Western Park Apartments
2016 - 25th Annual Show





Safe Harbor

Yu-Mei Lu
Western Park Apartments
2015 - 24th Annual Show

Artist Instructor Spotlight



Above: Betty with Rhoda Wasserman, a student from The Reutlinger Community.

Betty Rothaus

When asked why she likes working with us, Betty stated, "It is truly a privilege to work with AWE. This organization offers the very best gift imaginable to people living in long term care: the miraculous possibility of a new creative life. The teachers and volunteers are caring, skilled and overjoyed to see someone flourish as the residents find their creativity, imagination and hope again. Under their guidance, elders reclaim their birthright of a creative life and grow into new roles as mentors in courage, intelligence and excellence. The message here is about wholeness and healing, finding beauty and mystery everyday, and to never give up.

My life changed in 1990, when I began

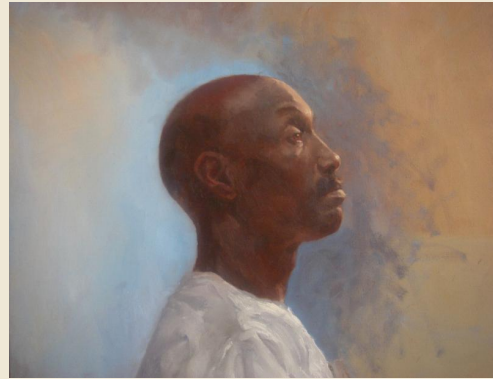


Self Portrait with

Reflections

by Betty Rothaus

working with elders and I have never looked back. They have enriched my life beyond measure, and I am forever grateful for this opportunity to serve them. In 2000, Brent Nettle, the brilliant founder of AWE, invited my students, in my ten year old full- time art program, to begin showing with AWE at their Annual Exhibit. This enlarged these resident artists' world beyond our community, gave them the opportunity of sharing their talent with a much larger audience, and gave them greater confidence in themselves by creating recognition and a magnificent celebration of them and their outstanding artistic efforts. I am so grateful to AWE , for their acknowledgement of my students and for my own support as a fellow teacher.



Dwight's Vision

by Betty Rothaus

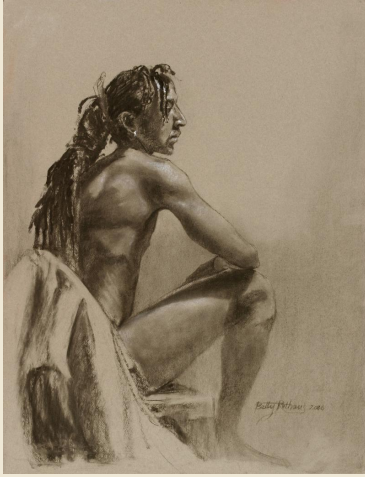
Mark Campbell, has long been a treasure to this organization as an inspiring mentor and friend to its teachers, volunteers and residents. Darcie O'Brien is a pleasure to work with in planning exciting and creative new exhibition opportunities, and Jason with his wonderful organizational skills, is a steady, timely and reliable liason I count on. With its forward thinking board of directors, this outstanding organization improves lives each and every day and offers the Bay Area an unprecedented model for healthy aging and living one's life with joy and blessings."

Fascinated by the arts since childhood, Rothaus creates through drawing, painting, sculpture and printmaking. She holds a BFA in Painting, an MFA in Printmaking and a degree as a Specialist in Art Education. She studied color intaglio printing at William Stanley Hayter's Atelier 17 in Paris, France, design with Sara Wallach, portraiture with Bob Gerbracht, and landscape with Albert Handell. Her drawings, paintings, prints and sculpture have been shown both nationally and internationally and hang in private collections worldwide.

Before beginning to teach seniors, she taught art to students ranging in age from early childhood through adulthood in public and private schools, university fine arts programs, museums and community centers. She has also consulted for public schools, training teachers how to use art in their classrooms. Since 1990, she has directed and taught the Art Program for elders at the Reutlinger Community in Danville, CA.

Art, Rothaus believes, must arise from an individual's rich and varied life experiences, interests, and innate curiosity. Her students learn artmaking skills, patience, and a love of beauty as they discover the miracle of their creative selves. She learns about perseverance, courage, and openness to the miracles life holds at any age.





Prince Oteino

by Betty Rothaus

Continuous Flow

by Betty Rothaus



Remember Who You Are

by Betty Rothaus

To learn more about Betty or to view more of her artwork, please visit her
website: www.bettyrothaus.com

Artist Instructor Exhibits

Dmitry Grudsky

is currently exhibiting at the Olive Hyde Art Gallery

Members Juried Show

123 Washington Blvd.

Freemont, CA

www.fremont.gov/OliveHyde

The exhibit started June 28th and will be open until July 27, 2019.

Gallery hours: 12:00 - 5:00 pm

Thank you to our Donors!

Art With Elders appreciates all of our supporters. Together we are truly changing the lives of hundreds of Bay Area seniors. We strive to open hearts and minds to new worlds, new discoveries, new joys, and subsequently, fresh meaning in life.

Thanks again to all of our donors for making this work possible!



AWE Staff and Artist Instructors

Left to right: Mark Campbell, Darcie O'Brien, Patrick St. Clair, Virginia Jourdan, Jason Varner, Insio Che, Mei Mei Everson, Betty Rothaus, Rafael Vaira, Sarah Dwyer, Santiago Gervasi, Yvette Brown, and Dmitry Grudsky (not pictured - Veronica Rojas and Min Lee)

[Visit our Website](#)

[Donate](#)

Art With Elders | 415-441-2650 | info@artwithelders.org | artwithelders.org

Follow us on FaceBook

