



art
with
elders

AWE News April 2026

Art With Elders uses the power of art, creativity, and community to enrich the journey of aging.

Message from the Executive Director

"And that, I think, is what the arts and the humanities do—they lift up our identities and make us see ourselves in each other." — Barack Obama

Greetings AWE Friends and Family,

At Art With Elders, the air seems to crackle with anticipation as we gear up for our Annual Exhibit Opening Event. This special day easily remains our grandest community-focused event of the year. The doors of Laguna Honda Hospital's storied Gerald Simon Theater will open on Saturday, June 13 at 2pm, welcoming all to enjoy artwork created by over 100 AWE students. Attendees will meet with many of the artists and their families, delight in food and music, and celebrate our growing creative community.

While the number of framed works presented at these exhibits remains impressive by all accounts, it represents just a fraction of our broad and growing constituency. Each year we staff struggle mightily with the process of how to fairly select which, out of the hundreds of submitted works, will be admitted. Surely, if we had the means and space available, we would include a piece from every student each year. Unfortunately, this is clearly untenable as the size of our program and number of students we serve continues its steady growth. This growth, while proof that our mission's positive impact blossoms, also demands that we be more selective each year.

AWE staff meet regularly to consider ways to be as fair as possible during the selection process while also mitigating the sting for students who sadly miss the cut. These solutions include bringing on unbiased professional artists to jury the submitted artwork, providing space for each AWE student to exhibit their work in our online exhibit, and increasing our on-site community exhibits so students can show off their talents where they live and take our classes.

Each of our students is special, unique and absolutely worthy of recognition. Their artwork consistently reflects wonderful creative qualities and shares something only they are capable of expressing. We realize that appreciating art is a subjective sport and there will never be reliable guidelines to qualify or objectify any of it. In this case, however, we are forced to try to do just that and hope that the result of our process brings much more joy than disappointment. We greatly appreciate the courage required by you artists to put your work out there for scrutiny and sincerely hope to honor you and your creations, if not this year and in this way, then soon and in a capacity that makes you smile.



Very Gratefully,
Mark Campbell
Executive Director

AWE Artist Feature - Doris Howard



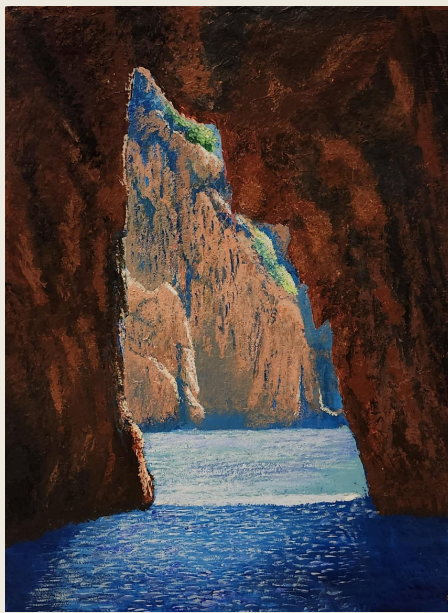
"Misty Mountain" by Doris Howard -
Heritage on the Marina



Born and raised in New York City, Doris spent most of her adult life on the Upper West Side until moving to San Francisco in 1989 to be closer to her son. She describes herself as an extrovert and “The #1 Volunteer of the Western World.”

At age 13 Doris went to her first demonstration in Harlem, an experience that led her to become active in civil rights and gender issues. She earned a doctorate in psychology in her 40s while raising her son and had a private practice for many years in New York. In San Francisco, she was Program Director of Shrader House, part of the Progress Foundation, a non-profit agency in the mental health field. She’s edited several books and published numerous journal reviews and articles. Doris was an active member of the Association for Women in Psychology, which presented her with The Doris Howard Lifetime Achievement Award in 1999. Over the years she traveled, for work and pleasure, to London, Paris, Rome, Australia and Asia.

Doris began painting and sculpting ten years ago and works in watercolor, acrylic and encaustic. She favors geometric designs which are featured in much of her work. “So many people are reluctant to do art,” she says, “But it’s one of the best things to do. It’s the doing that’s the fun part.”



"Sea Cave" by Doris Howard Heritage on the Marina



"Matriarch" by Doris Howard Heritage on the Marina

Classes News

AWE with Serendipity School Belmont

AWE Open Studio groups participated in an intergenerational Space-themed project with the second grade class at Serendipity School in Belmont. AWE and Serendipity students wrote letters to each other and created art about outer space. There was a special Expo Night event at Serendipity School where the works were exhibited.



AWE and Serendipity Space-themed exhibit



"The Wonder of Space" by Jo Solo - Open Studio Monday

Exhibits and Events News

AWE at the Bank of San Francisco Laurel Village

3/19/26 – TBD

3471 California Street

San Francisco, CA 94118

AWE artworks are featured in the new Laurel Village branch of the Bank of San Francisco. AWE would like to thank our new community partner Bank of

S.F. for hosting this exhibit and also for their contribution toward funding this year's 33rd Annual Exhibit.



AWE Team, photo by Drew Altizer



Ribbon cutting, photo by Drew Altizer



"San Francisco" by Angela Frazier - Laguna Honda

Save the Date

AWE 33rd Annual Exhibit - Saturday June 13, 2-4p
Gerald Simon Auditorium at Laguna Honda Hospital 375
Laguna Honda Blvd.

Please join us for our in 33rd Annual Exhibit Opening Event! More than 100 artworks by students participating in AWE classes will be on exhibit. The event is free and open to the public. A donation at the door is requested, but not required. Light refreshments will be served. The venue is wheelchair accessible and free parking is available. Thank you to our juror S.F. Bay Area art community member [Gay Outlaw](#).



MNC Inspiring Success Community Resource Fair

Fri. Apr. 24, 2026, 1a-2p
MNC Wolfsohn Campus
362 Capp St., SF, CA

AWE will be tabling at the MNC Inspiring Success Community Resource fair.

"Join us for a welcoming day where you can connect with programs and services designed to support you and your family...Looking for a job, housing assistance, early education, after-school programs, or community support? We have resources for you. Meet local partners, explore opportunities, and discover services that help families, youth, and older adults thrive."

MNC
INSPIRING SUCCESS
INSPIRANDO ÉXITO

HEALTHY AGING
AND DISABILITIES

COMMUNITY FAIR 2026

A DAY FOR OUR COMMUNITY

April 24 / Abril 24
10:00 a.m. - 2:00 p.m.
MNC Wolfsohn Campus
362 Capp St., San Francisco, CA 94110

Join us for a welcoming day where you can connect with programs and services designed to support you and your family.

¿Buscas trabajo, apoyo para vivienda, educación temprana, programas después de escuela o recursos comunitarios? Estamos aquí para ti. Conoce organizaciones locales y descubre oportunidades que ayudan a familias, jóvenes y personas mayores a salir adelante.

mncsf.org

Never Better Elders Celebration & Resource Fair

Thu. May 14, 1-3:30p
SF County Fair Building
9th Ave at Lincoln Way, SF,
CA

AWE will be tabling and also will offer a mixed media workshop in the Creativity Room at the Never Better Elders Celebration & Resource Fair.

- Over 25 Citywide Resources
- Live music & dance performances
- Emergency Go Bag raffle
- Tech Help and Mini Classes

2026 Never Better Elders
Thursday, May 14th | 1-3:30pm

You're Invited!

- Live music & dance performances
- Art with Elders Creativity Room
- Emergency Go Bag raffle
- Emcee Bobby Thomas
- Meet New Friends

Over 25 Citywide Resources
Find info on healthy aging, housing, arts, advocacy, legal aid, lifelong learning, emergency preparedness, senior services, and more.

Tech Help and Mini Classes
All day tech room with help in English and Chinese. Bring your cell phone, tablet, and questions! Find out: *What is AI and How Can I Use It?*

Make a Day of It!

- Carpool with friends
- Visit the Botanical Garden & Gift Shop "free" to SF residents
- Have dinner, a snack, or stroll along Irving Street

**SAY YES...
to Volunteering
to Connecting
to Good Neighbors
to Advocacy
SAY YES to LIFE!**

JOIN US AT THE SF COUNTY FAIR BUILDING
9th Avenue at Lincoln Way
MUNI: 7, 44 & N-Judah. Parking on street or paid at the GG Park Garage

For more information contact:
Patti Davidson, patti@sfcommunityliving.org 415-821-1003, ext. 106

COMMUNITY LIVING CAMPAIGN | **SAN FRANCISCO HUMAN SERVICES AGENCY**
Department of Disability and Aging Services

Become an Annual Exhibit Sponsor

Your support helps our Annual Exhibit Opening Event celebrate the lives of often marginalized older adults and bringing them to center stage.

[Please see linked flyer for more information.](#)

More Info

Please visit the [AWE Exhibits Schedule](#) and [AWE Classes page](#) on our website for more info.

Thank You Donors!

Please consider making a donation
Your gift makes a huge difference
in the lives of our students!

Art With Elders appreciates all of our supporters. Together we are truly changing the lives of hundreds of Bay Area seniors. We strive to open hearts and minds to new worlds, new discoveries, new joys, and subsequently, fresh meaning in life.

Thanks again to all of our donors for making this work possible!



AWE Staff and Artist Instructors

Row 1 L-R: Crystal Booth, Yvette Brown, Mark Campbell, Insio Che, Yan Chen, Aimée Duddridge-Picard, Mei Mei Everson, Keesje Fischer, Santiago Gervasi. **Row 2 L-R:** Sergio Giovine, Dmitry Grudsky, Iris Hu, Virginia Jourdan, Dulama LeGrande, Min Lee, Hugh Leeman, Megan Majestic, Natalie Quek. **Row 3 L-R:** Andrew Mills, Darcie O'Brien, Miranda Putman, Betty Rothaus, Maïté St. Clair, Patrick St. Clair, Rafael Vieira, Stephanie Vlahov



Visit our Website

Donate

Art With Elders | 415-441-2650 | info@artwithelders.org | artwithelders.org

Follow us on [Facebook](#) & [Instagram](#)





Try email marketing for free today!