

Art With Elders
Open Studios with
Darcie and Kathryn
www.artwithelders.org



“Self Portraits” and “Indexical Clothing Portraits”

**Led by Kathryn Whitten
for the AWE Saturday
Online Open Studio**



0:00:47

1:32:20



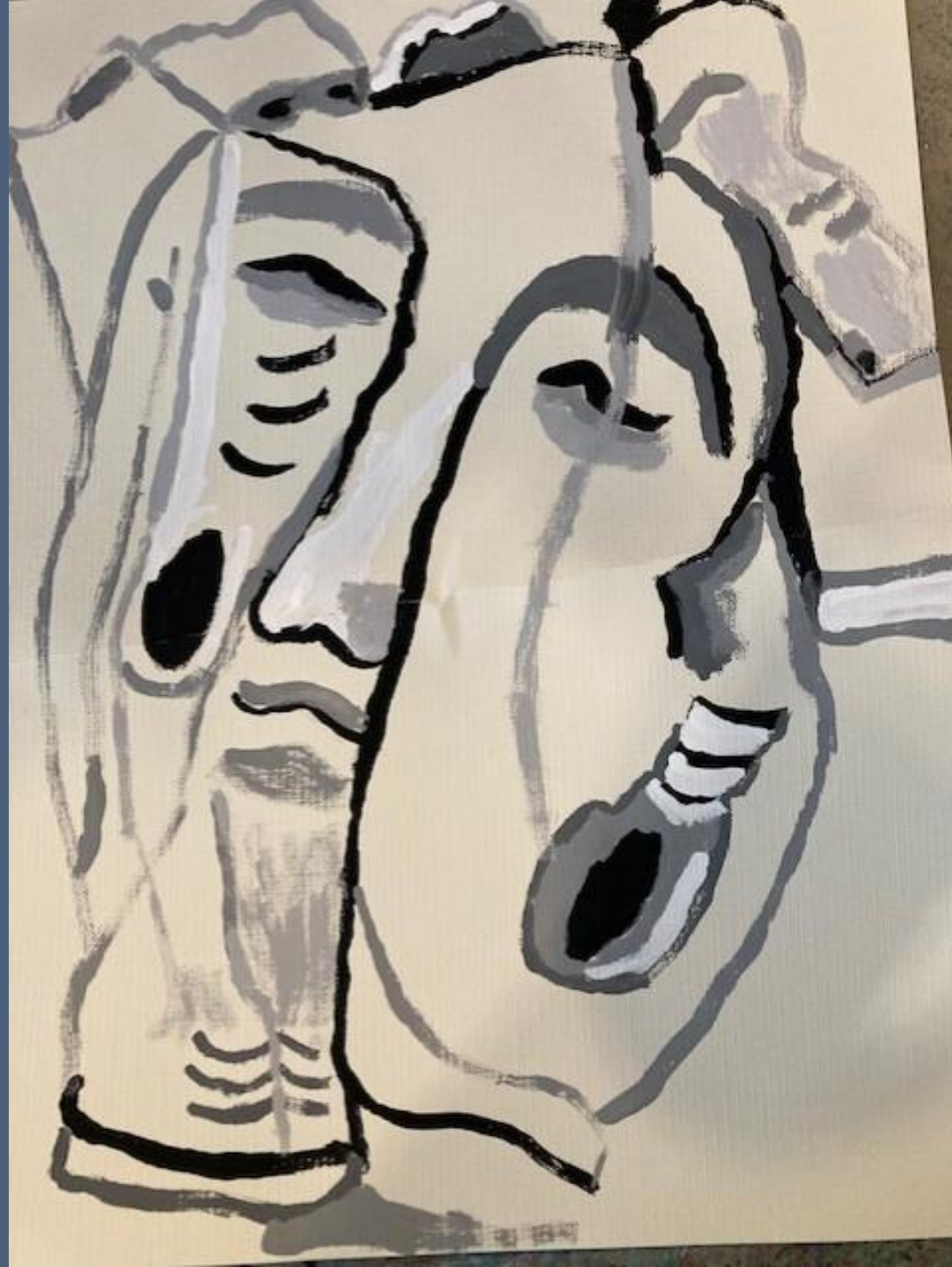
Kathryn Whitten

Indexical Portraits Project

Part 1:

Painting Drapery

Shirley



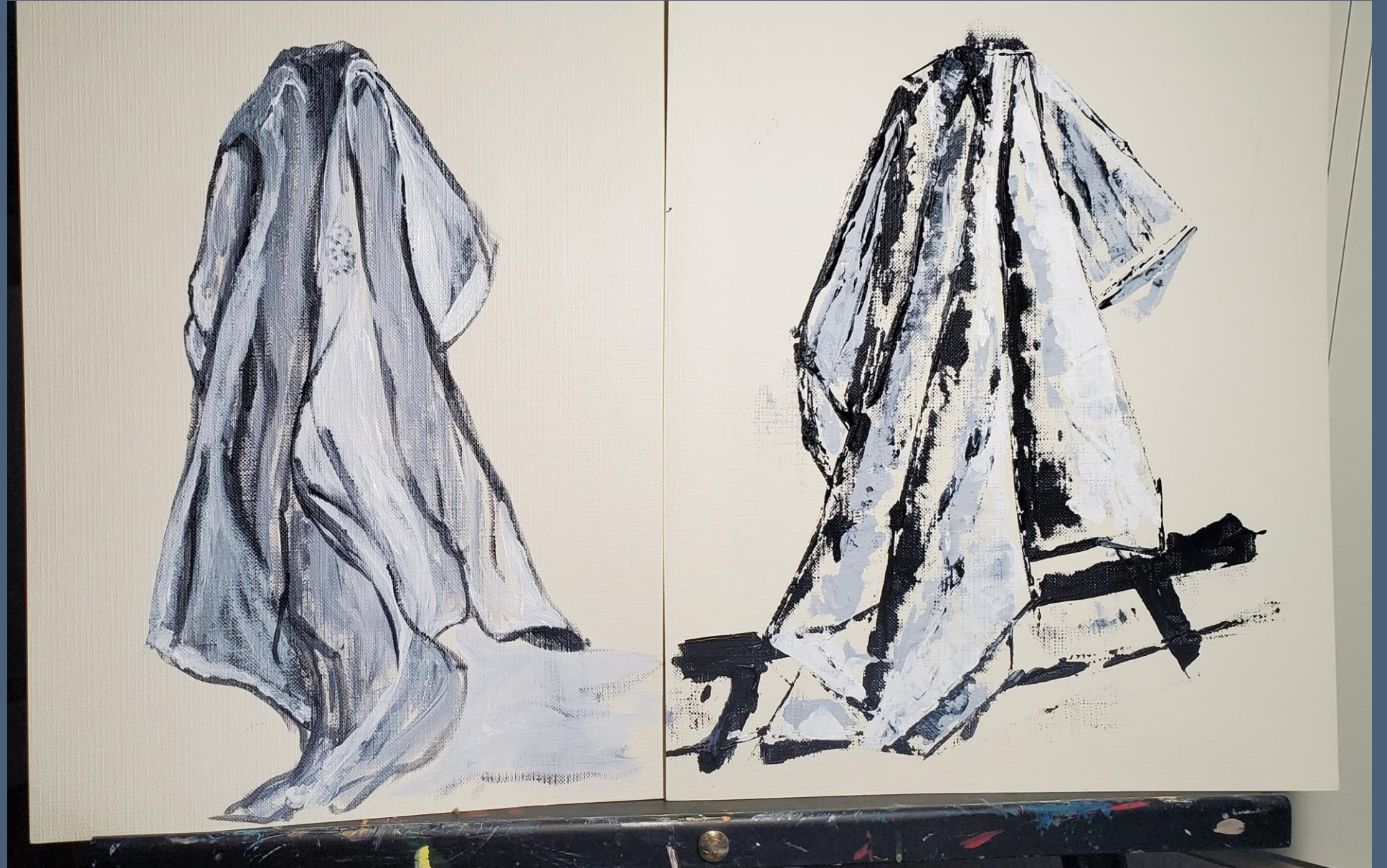
Melinda



Darcie



Carol



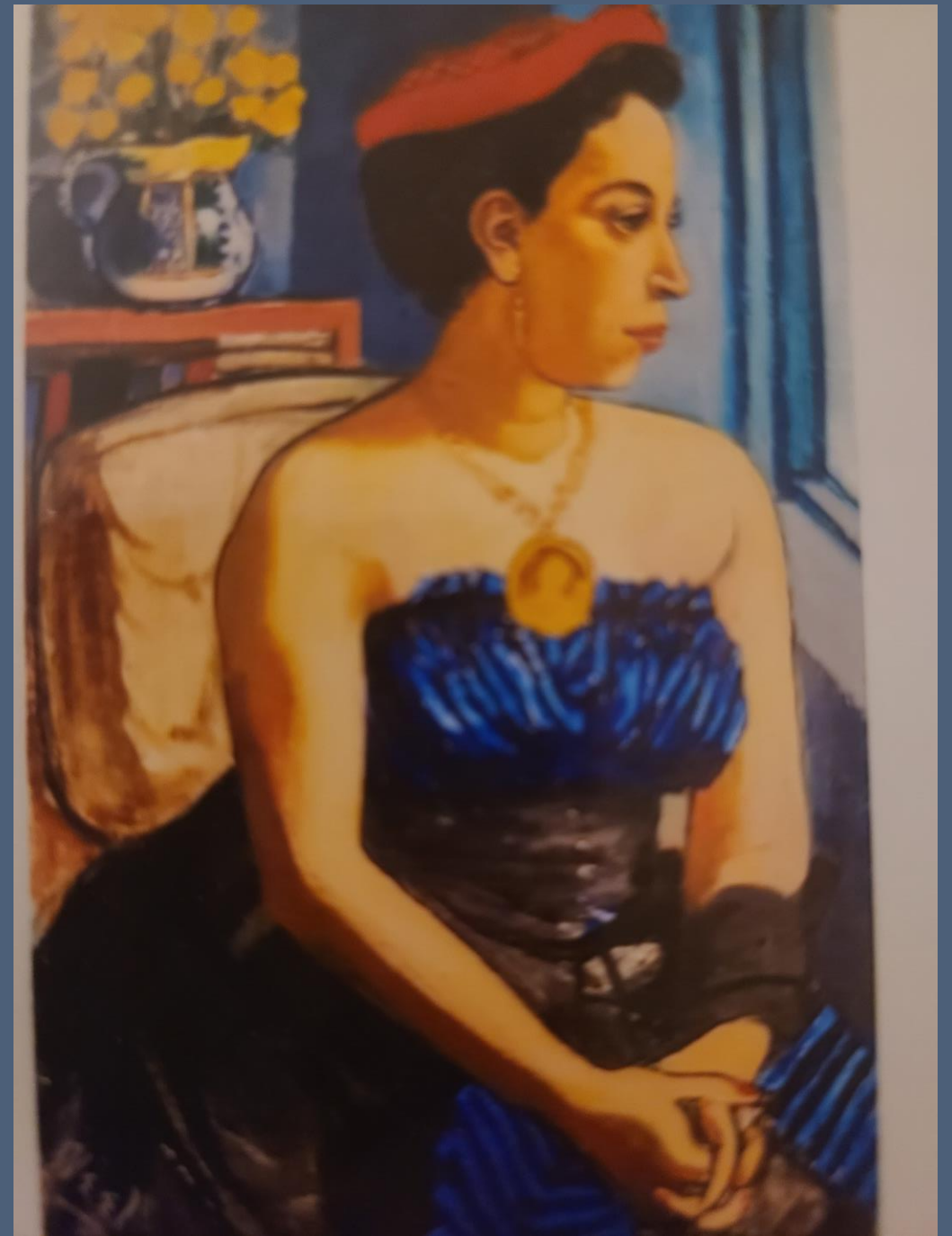
Indexical Portraits Project

Part 2

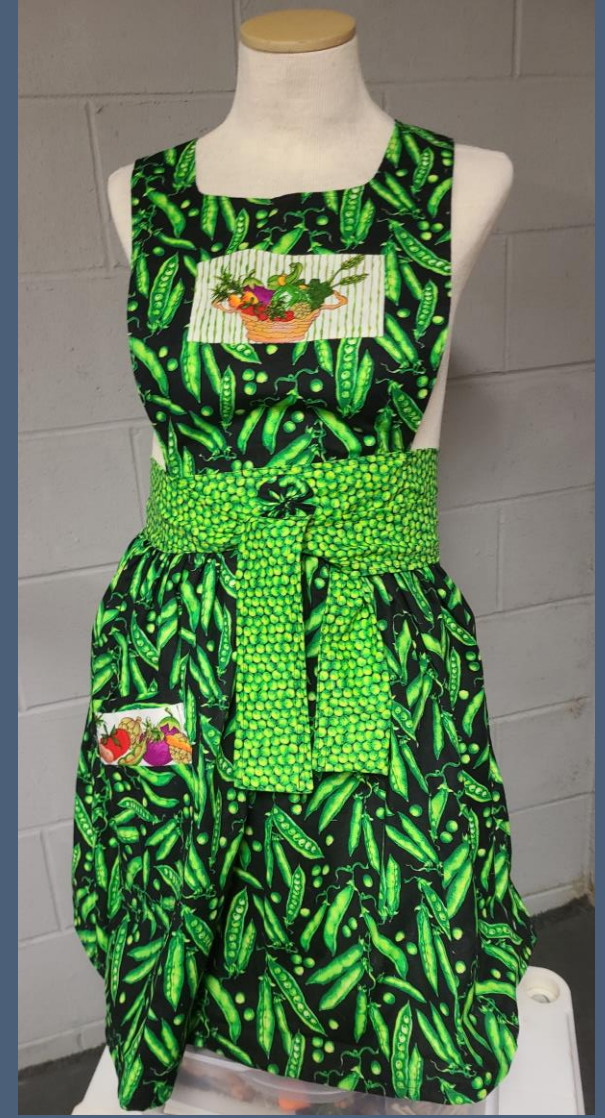
Carol
Mom's Dress



Gayle



A detailed collage on a black background. At the top, a map of Central America is shown, with a pink dress cutout overlaid on it. The dress has a black ruffled waistband. To the right of the dress is a list titled 'Grand Allusions' with handwritten text: 'dresses small', 'precisely what decade', 'waistlines - hi sm or moved way down', 'Sundance, or a fashion poetry clothing is my map laid out', and 'Jaipete 2021'. The collage is surrounded by various sewing-related items: buttons, thread spools, a pair of scissors, a measuring tape, a ruler, a needle, and a pair of pliers. There are also floral cutouts and a small piece of paper with the text 'SUND ARIA'. The entire collage is framed by a black border with a white scalloped edge.



Kathryn
My Father



Kay
Husband's
Ties



Kay
Bear from Mom's
Aprons

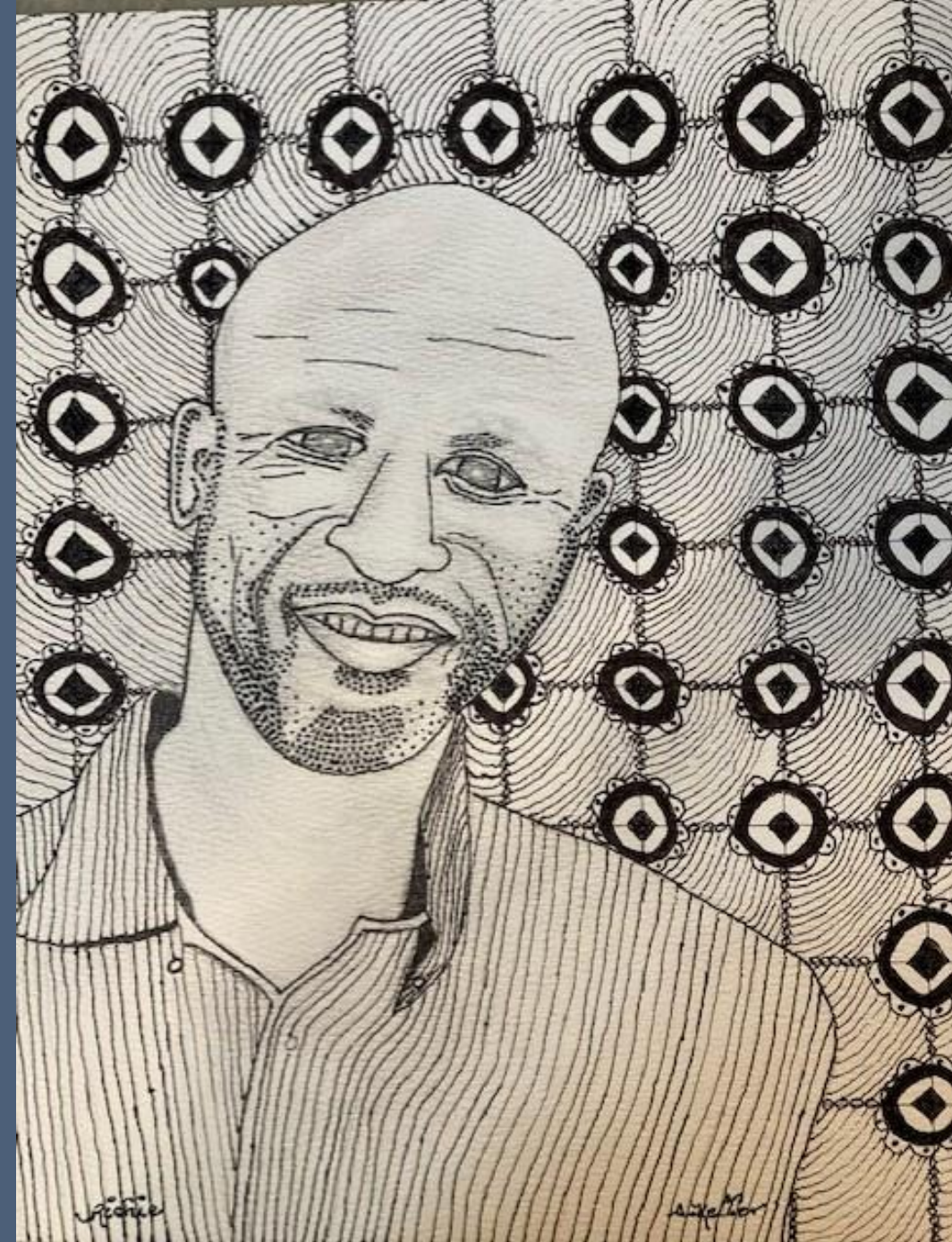


Self Portraits Project

Gayle
Self Portrait



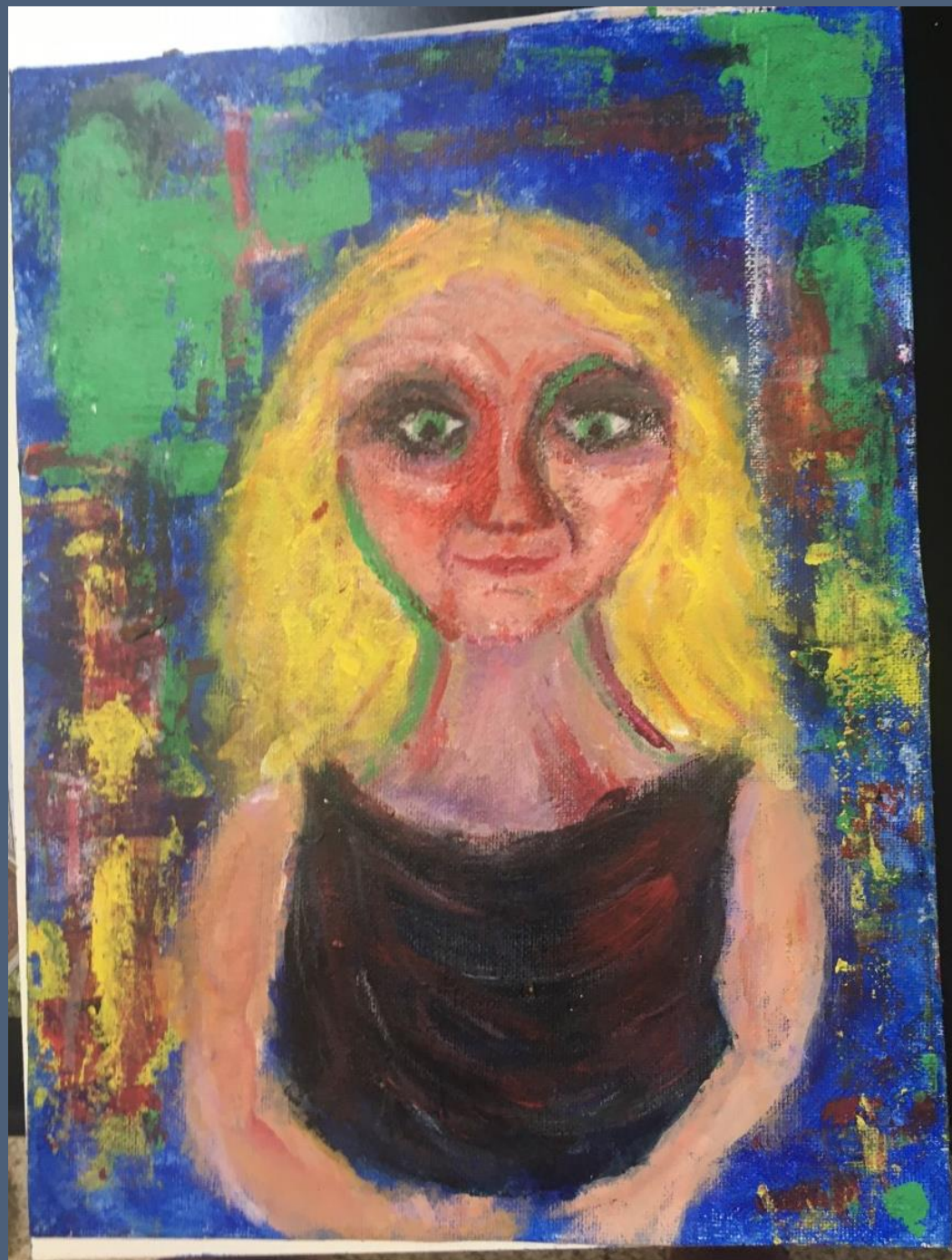
Shirley
Self Portrait
and Richie



Shirley
Self Portrait



Pat
Self Portrait



Fran
Self Portrait



Paula
Self Portrait



Mary Ann
Self Portrait



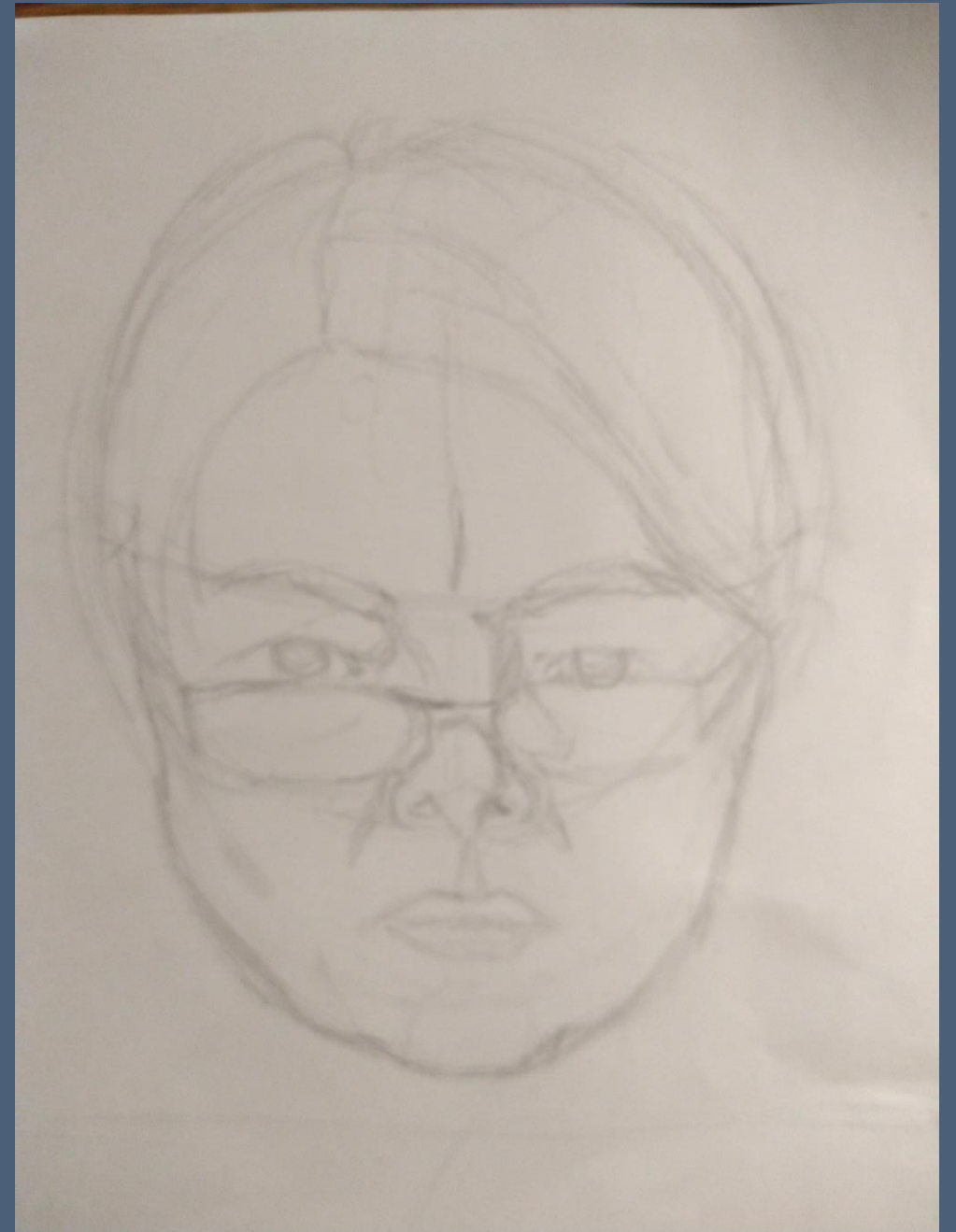
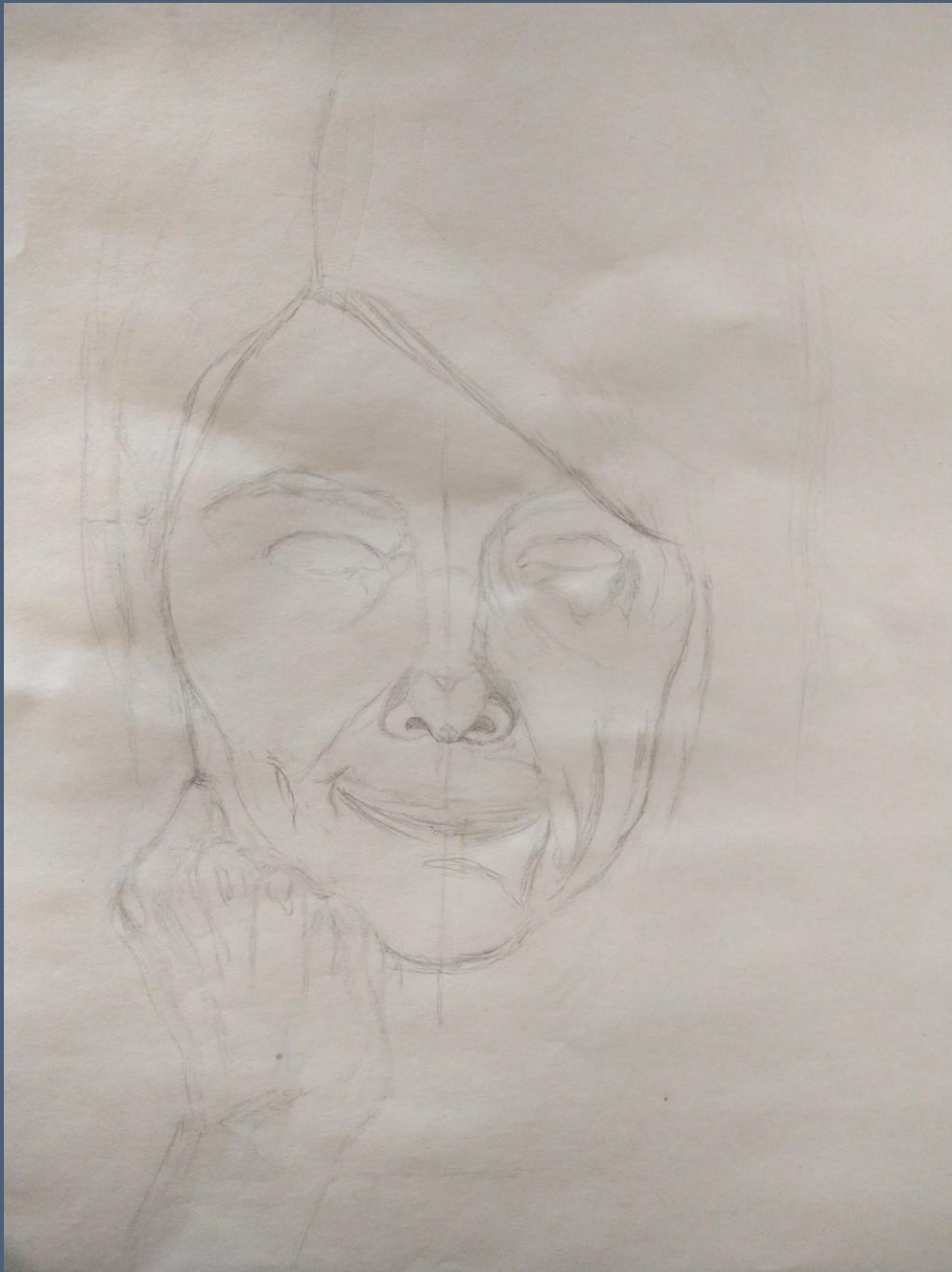
Kay
Self Portrait



John
Self Portrait



Melinda
Self Portraits



Darcie
Self Portrait



Kathryn
Self Portrait

