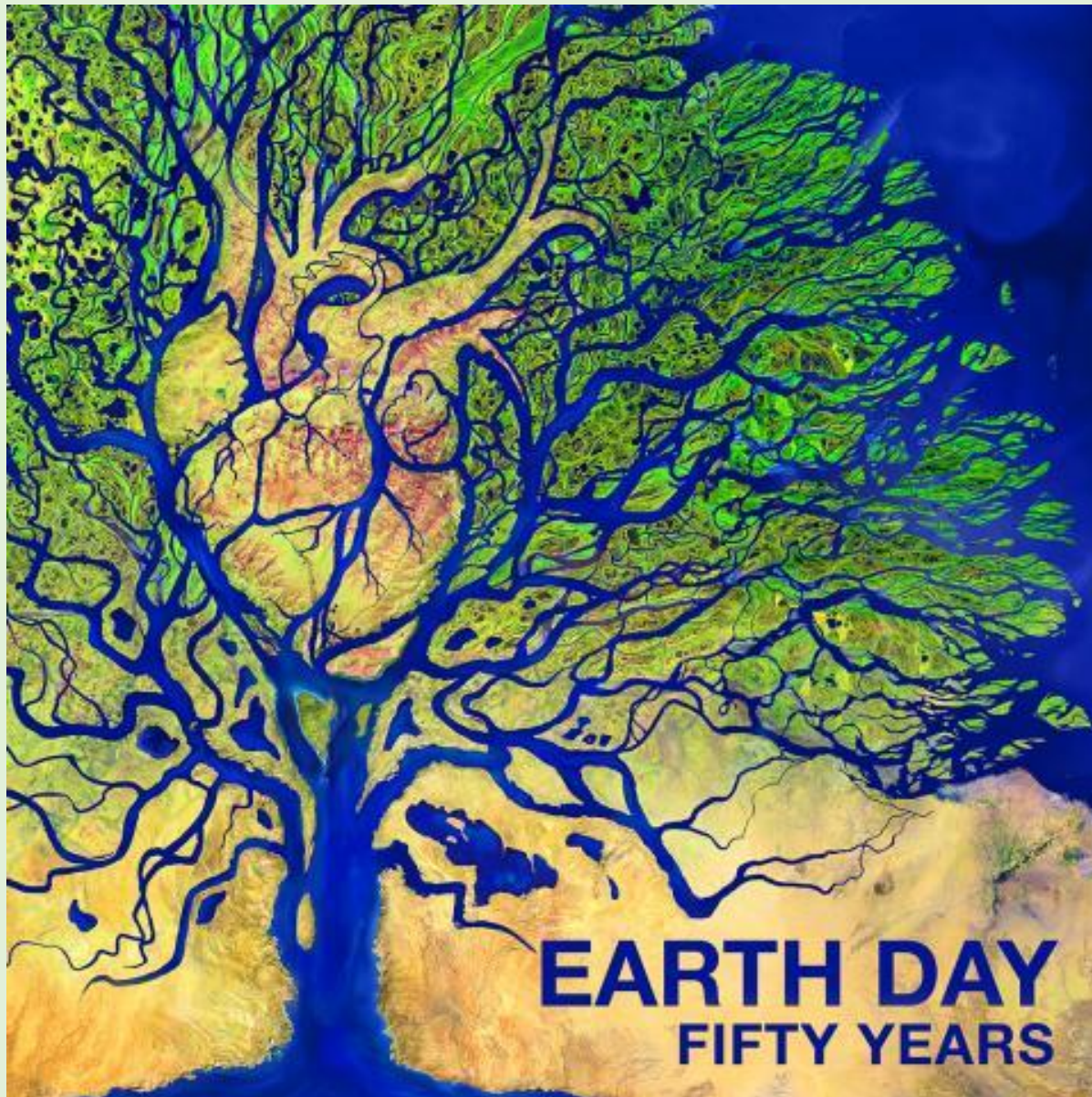


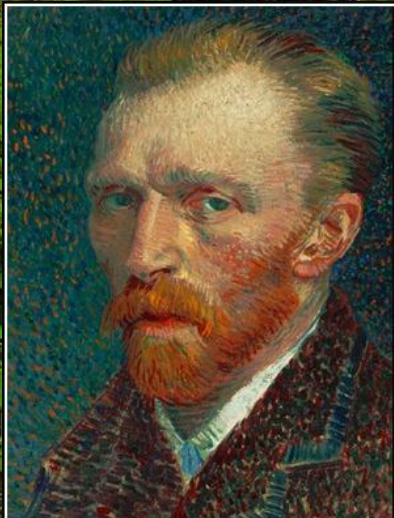
Art With Elders
Interactive Online Learning
www.artwithelders.org



Earth Day 2020

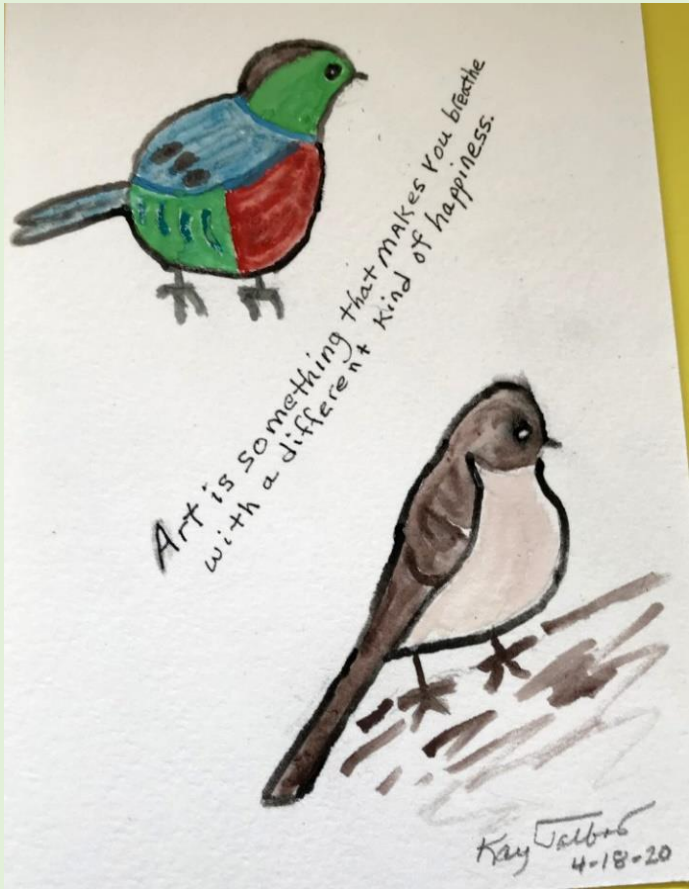
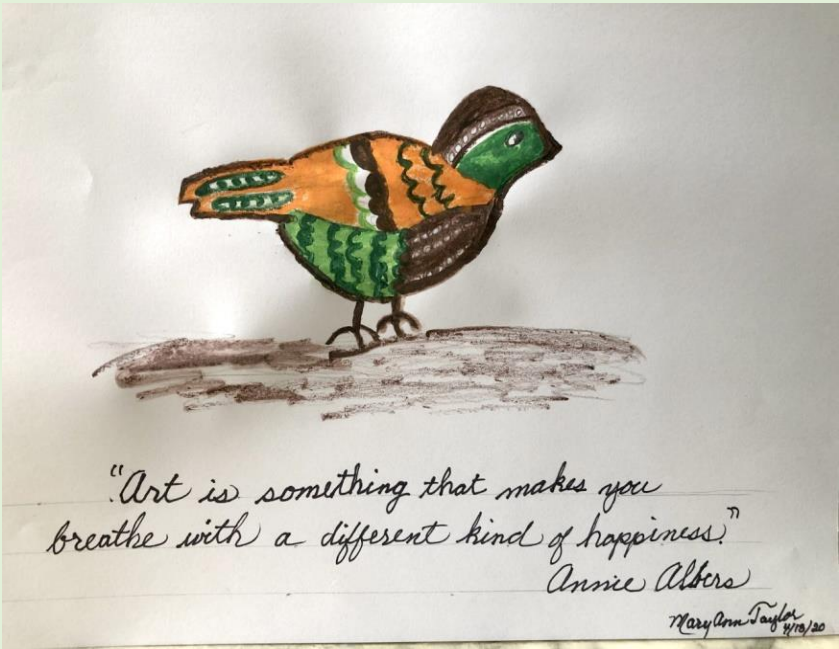


Like music and art, love of nature is a common language that can transcend political or social boundaries.
Jimmy Carter

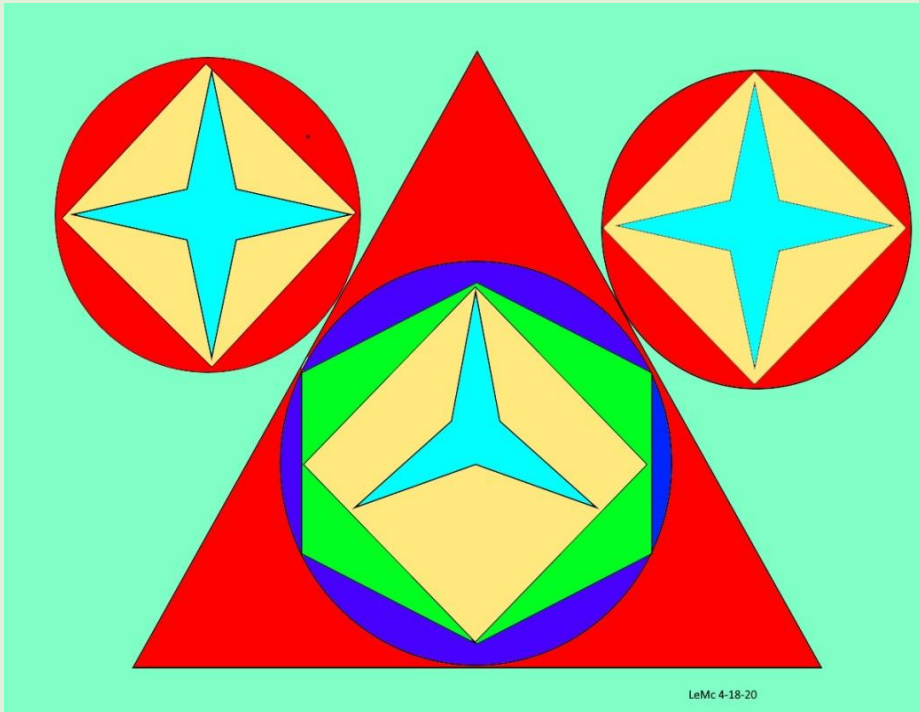


...and then, I have nature and art and poetry, and if that is not enough, what is enough?
Vincent Van Gogh

Recent Works



Recent Works





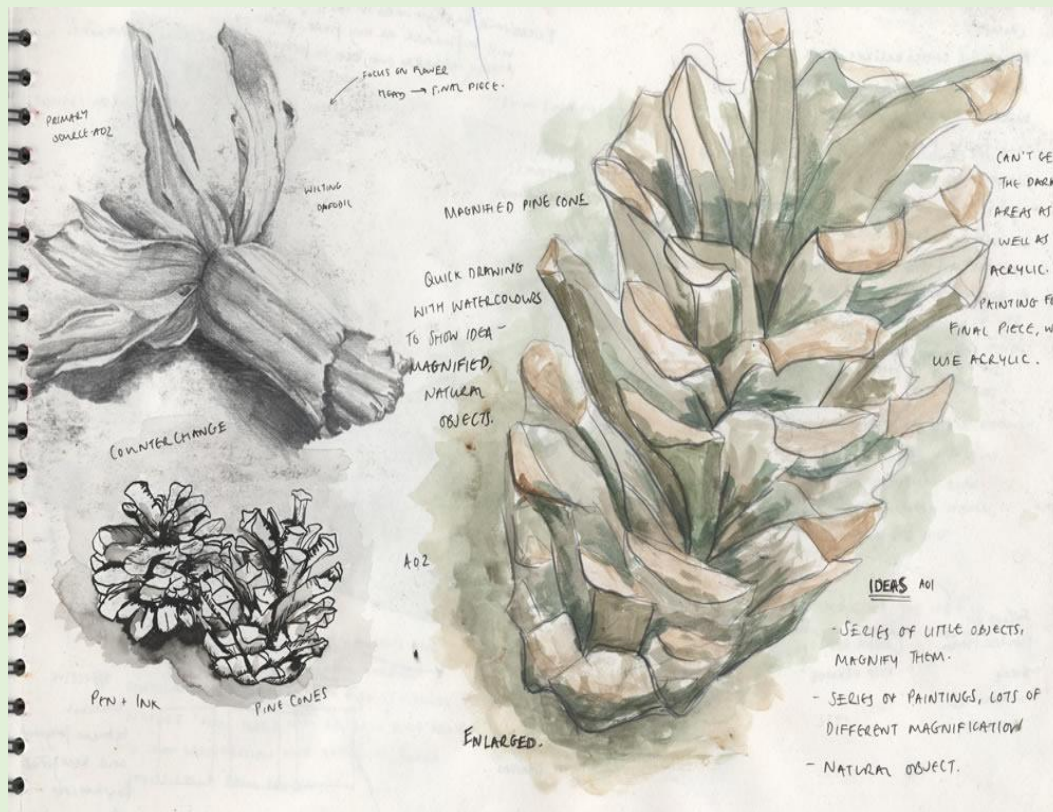
Earth Day Assignment

- Go outside and collect a few treasures from nature; pinecone, stone, leaf, twig, etc. If you can't go outside, look for some things in your house.
- In your studio, arrange your finds in a composition to draw.
- Sketch, draw, paint. Start with light sketch.
- Decide: one object or more (note object size, too).
- Somewhere on your page, write a few words about your objects and how you feel about them.

Styles and Approaches



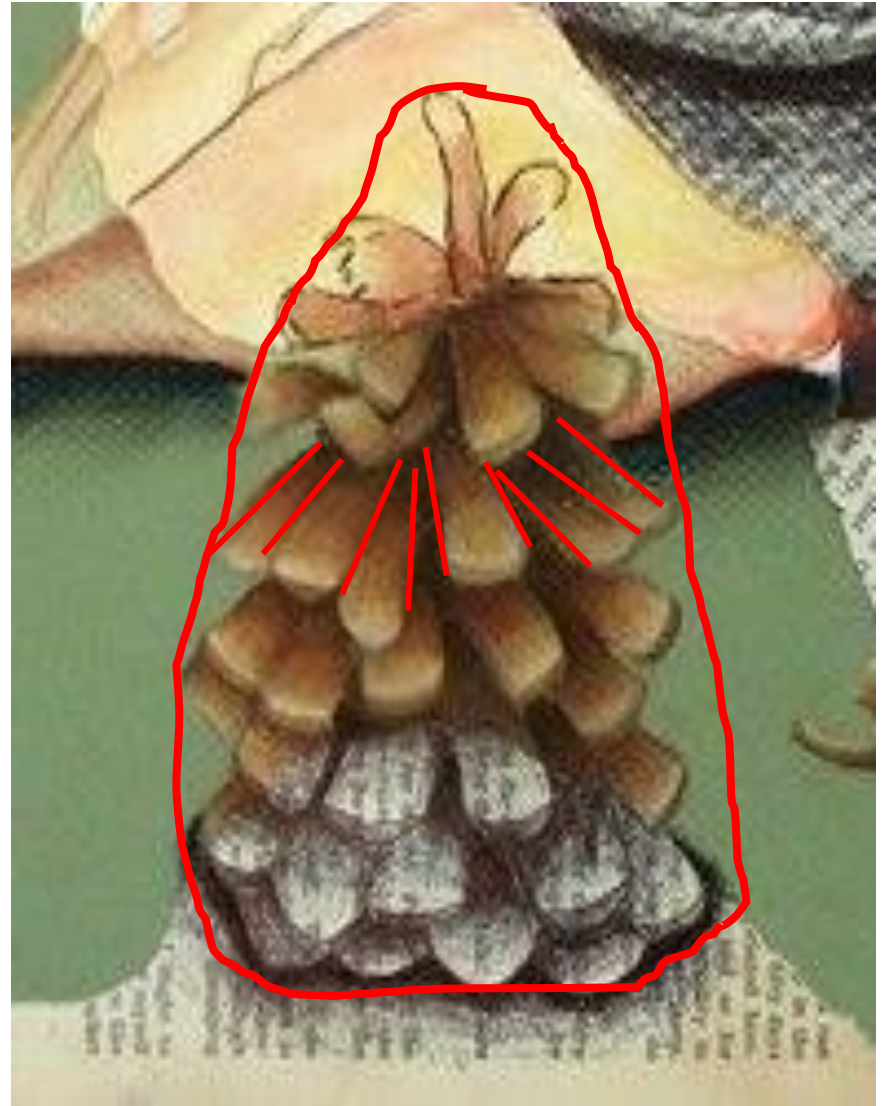
Styles and Approaches



A black and white still life painting featuring a variety of objects on a light-colored surface. In the center, a tall, slender vase with vertical fluting holds several long, pointed objects, possibly flowers or sticks. To the left of the vase is a pear and an apple. In front of the vase is a pear and a small, round object. To the right of the vase is a large, rounded object, possibly a bowl or a piece of fruit, and a small, round object. A red bounding box highlights the top of the vase, and another red bounding box highlights the bottom of the vase. A red bounding box highlights the pear on the left, and another red bounding box highlights the apple on the left. A red bounding box highlights the pear in the foreground, and another red bounding box highlights the small round object in the foreground. A red bounding box highlights the large rounded object on the right, and another red bounding box highlights the small round object on the right.



Drawing



Values and Shading

Value Scales

Value: The lightness or darkness of a color

	Pencil Only	Blending Stump/Smudge	Hatching	Cross-Hatching	Stippling
High Light (Leave White)					
Light					
Low Light					
Medium					
Low Dark					
Dark					
Darkest					



Art With Elders
Interactive Online Learning
www.artwithelders.org



I hope you will enjoy and find value in our session. Your support helps keep our program and our artist instructors going. If you are able to give a donation for this class, we would greatly appreciate it. Thank you!

Donations may be made on our website at:
ArtWithElders.org

Or by check, mail to:
Art With Elders
236 West Portal Ave. #845
San Francisco, CA 94131